

Passage to Bliss

Sky and earth elements create a serene retreat

By Stephanie Herzfeld

You'd never guess it by its current appearance, but this ground-floor master bathroom, part of a 1960s Bethesda, MD, rambler, hadn't been updated since its construction. The cramped, dated space lacked all the features the homeowners, a professional couple, desired: Modern amenities, ample closet space and a soothing, tranquil atmosphere. Fortunately, the remodeling results turned out to be heavenly—resplendent with puffy clouds and all—thanks to builder Eugene Zagoskin.

In order to accommodate his client's wishes, Zagoskin, president of Rockville, MD-based Z&P Construction, Inc., began the renovation by expanding into the large laundry/utility room that was adjacent to the master bath and reconfiguring the resulting 17-ft. x 15-ft. rectangular layout. Inspired by European-style passage architecture—in which special ceilings effects tie a space together—the builder embraced the concept with a unique approach. "To replicate the traditional lightness of the passage design, I painted the bathroom ceiling to look like a sky and punctuated it with recessed light fixtures," he said.

Maintaining the ceiling as a design element throughout the bath, Zagoskin opted for an open floor plan with four distinct, carefully-placed sections for the vanity, soaking tub, shower and closet. The unusual, five-sided, walk-in closet that delivers the requested closet space is located across from the tub, which rests next to the shower. The walk-in shower is separated from the toilet with a column/glass wall divider that adds interest to and prevents the bathroom's linear shape from becoming mundane. As part of this careful layout, Zagoskin made a point to omit doors as partition elements in order not to destroy the open flow of the room. "The clients wanted a doorless entrance to the shower but the challenge was to make sure the water stayed put," he said. "So I elevated the wet areas."

Once the logistics were settled upon, Zagoskin enhanced the serene mood created by the ceiling by installing warm, earthy flooring with radiant heating, an upgrade the homeowners couldn't resist. The soothing, glazed stoneware, in toasty beiges and browns, complements the richness of the old-fashioned, furniture-like fixtures and storage. Notably, the vanity itself is truly vintage, a design theme the antique-loving couple wanted to carry through from the rest of their home to the bathroom. "The washbasin area is actually an altered 19th-century chest," Zagoskin said. "The top of the chest was replaced with beige marble to house the two decorative porcelain washbasins." Period-inspired mirrors and light sconces were added to bring the Old World aesthetic to completion.

Despite his clients' love for all things aged, the builder selected modern shower components and plumbing fittings so that the couple could enjoy the best of 21st-century luxury bathing. However, in deference to the striking vanity and other old-time elements, Zagoskin chose unobtrusive satin nickel finishes for the plumbing fittings, allowing them to gracefully blend into the distinctive setting. Happily, the

new plumbing turned out to be a big hit with the homeowners. "They just love the shower system," Zagoskin said.

And most importantly, they adore the finished look and feel of their renovated bathroom. After all, what's not to love? Puffy clouds, warm floors and antiques culminate in a dreamy setting that acts as the perfect passageway to blissful bathing. ■



The new master bath is a serene and relaxing retreat. A painted ceiling with fluffy white clouds adds lightness and whimsy to the space while furniture-inspired fixtures and genuine antiques (i.e. the vintage vanity) keep it grounded. Meanwhile, the stoneware tile, warm in both appearance and feel, keeps the bath cozy.



SHOWER

- Modern, luxury fittings allow for spa-like experience
- Components spec'd in understated metallic finishes to blend in
- Doorless entrance reinforces passage concept
- Glass wall divider acts as functional and beautiful partition
- Built-in seat added for further comfort

PAINTED CEILING

- Fluffy, white clouds add whimsical appeal
- Lightness of color and design nicely juxtaposes conservative furniture pieces
- Passage architecture concept ties open floor plan together

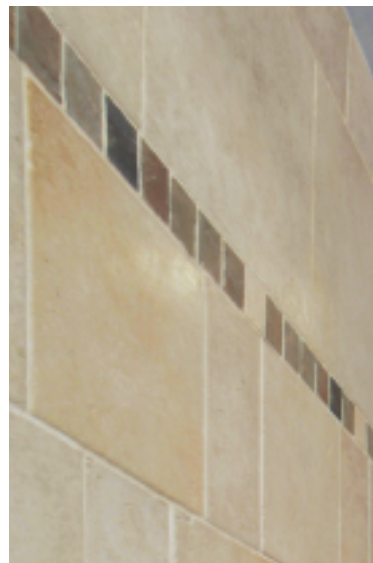
TILES

- Underfloor heating keeps toes toasty
- Earth-tone flooring and wall palette complement "sky" ceiling
- Glazed stoneware imparts natural look and texture, is extremely durable





Rich, wood furniture storage (left) adds gravity to the ceiling and flooring. The old-fashioned pieces are a continuation of the antiques found throughout the rest of the home. The most favored find is the 19th-century chest (below) that Zagoskin turned into a vanity with a marble top. Warm, neutral tile and elegant, though unobtrusive, plumbing finishes (bottom left and right) let the other design elements take center stage.



sources

Contractor: Eugene Zagoskin—Z&P Construction, Inc., Rockville, MD

Project Manager: Max Buslovich

Manufacturers

Cabinetry: xxxxxxxx

Sinks: Kohler

Faucets: Grohe

Shower components: Grohe

Lighting: Lightolier

Tub: Jacuzzi

Toilet: Toto

Tile: Lea Ceramiche

Photography: © Boris Feldblyum

products



1



2



3



4



5

1 According to Zagoskin, his clients absolutely love the **Grohe** Freehand shower system; its unique design allows users to switch from the head- to side-shower position thanks to its pivoting shower arm. The showerheads offer a number of different spray options, including normal, pulsator and eco (water-conserving) for a custom shower experience. **Circle No. 115**

2 Tucked into a private nook, **Toto's** Plymouth toilet installation meets the clients' request for privacy yet honors the passage architecture concept. The low-profile, one-piece Universal Height toilet is equipped with the maker's Power Gravity flushing system and is available in a wide range of colors. **Circle No. 116**

3 Shown in the vessel lavatory model, **Kohler's** Artist Editions Serpentine Bronze self-rimming profiles were chosen for their handcrafted, period appeal. The vitreous china sinks have matte and glossy enamel raised surfaces that feature various sea creatures. Each sink is individually crafted and may vary piece to piece. **Circle No. 117**

4 The stone-like Ancient Jerusalem glazed stoneware tile from **Lea Ceramiche** was installed for the warm, old-time atmosphere it imparts. The tile, shown in a mix of Hebron white and darker accent colors, is extremely durable for high-traffic areas and comes in a number of large-format and decorative profiles. **Circle No. 118**

5 Embedded within a tiled deck, the **Jacuzzi** Gallery corner bath is installed at an elevation to better define that area of the bathroom. The tub, available in both jetted and non-jetted versions, measures 60 in. x 60 in. x 22 1/2 in. and offers room for two. Sculpted armrests and a contoured backrest ensure that users enjoy a relaxing experience. **Circle No. 119**